

SEWER IN BRIDGE - SECOND STREET - SIDE OF ARROWHEAD AVENUE

Profiles and Plans

SEWER

Bridge, B and Second Streets

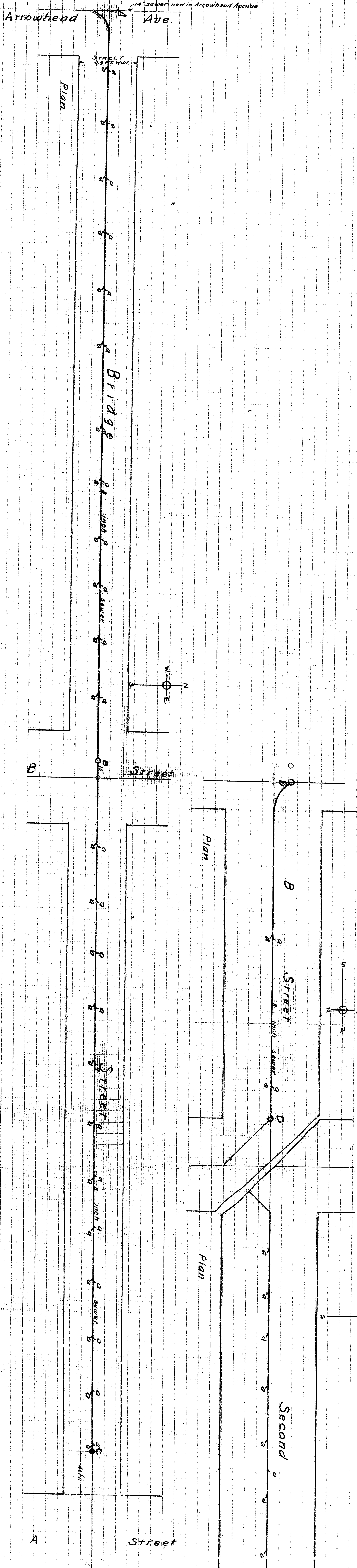
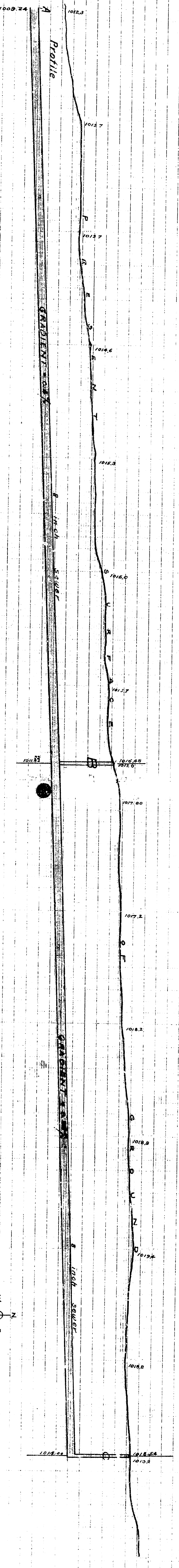
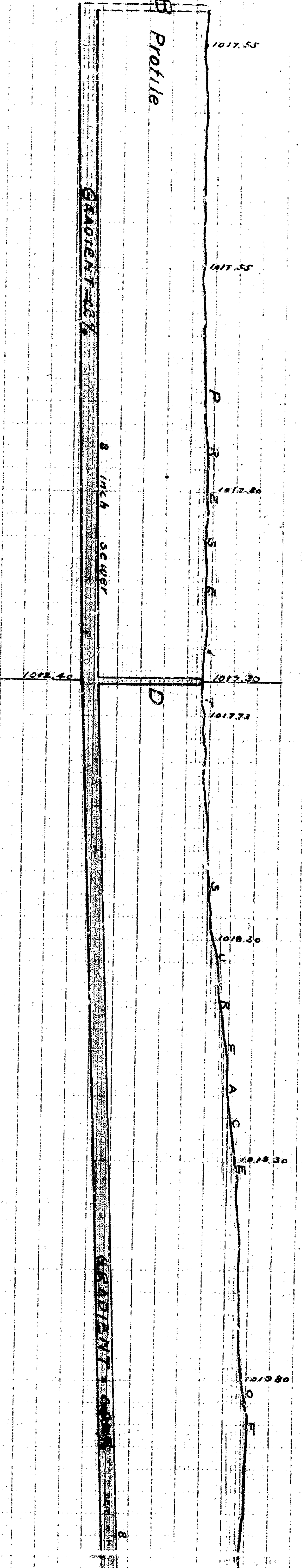
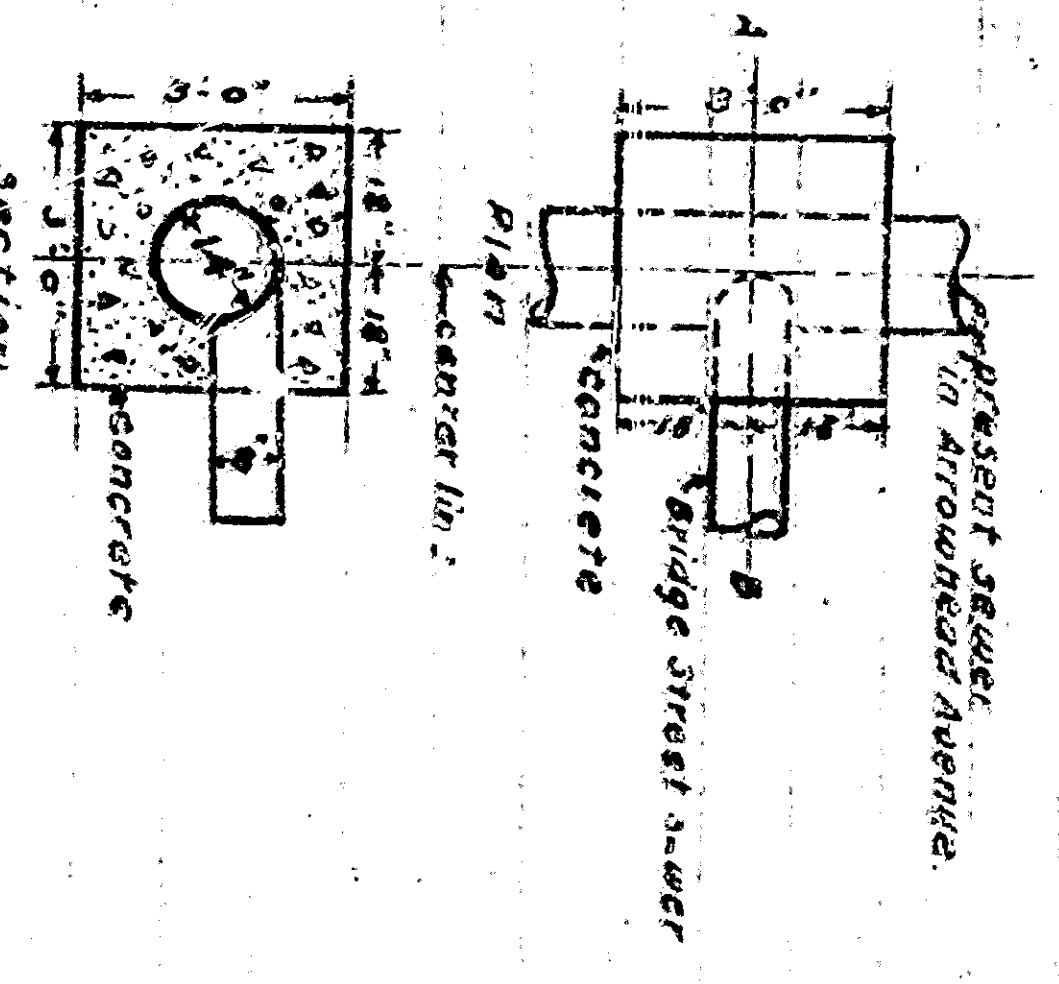
San Bernardino California

November 14-1910. A.L. Sloan City Engineer

No. 26

Scales
 Profile Vertical 1 inch = 4 feet
 Horizontal 1 inch = 40 feet
 Plan 1 inch = 40 feet

PLAN AND SECTION SHOWING CONNECTION WITH EXISTING SEWER NEW IN ARROWHEAD AVENUE AT POINT DESIGNATED A
 Scale 1/4" = 1'-0"



Engineer's REGISTERED

Engineer's REGISTERED

Engineer's REGISTERED

Profiles and Plans

SEWER

Bridge, B and Second Streets

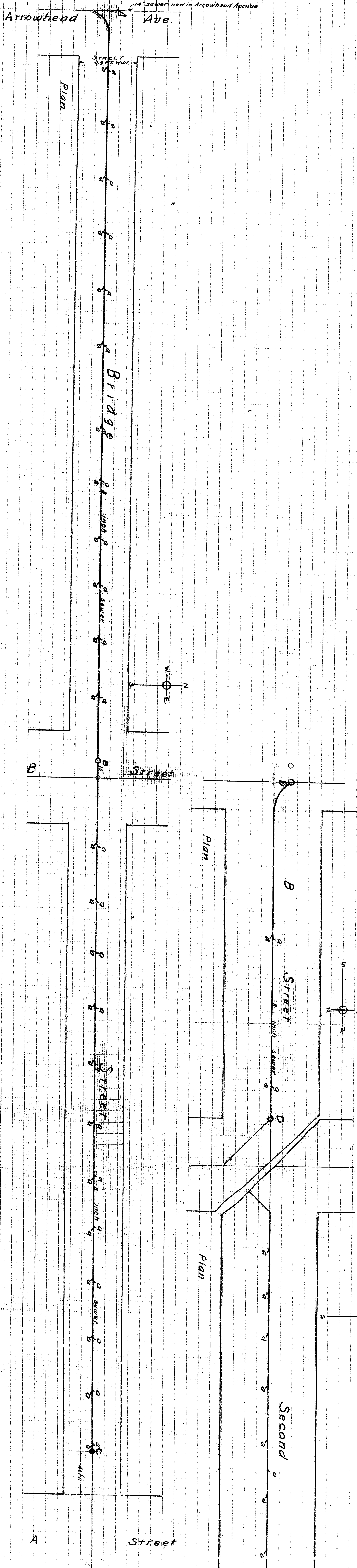
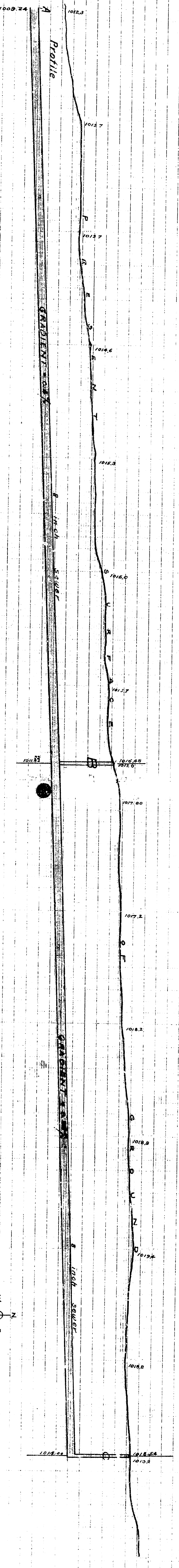
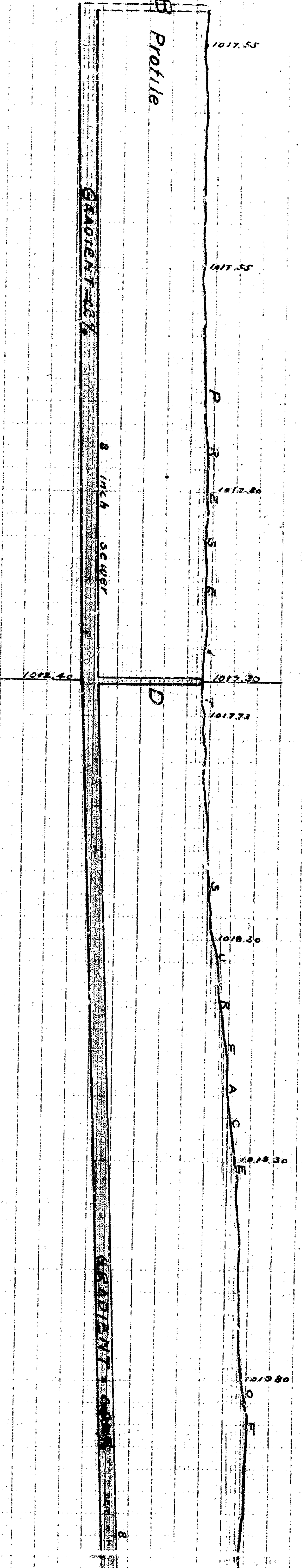
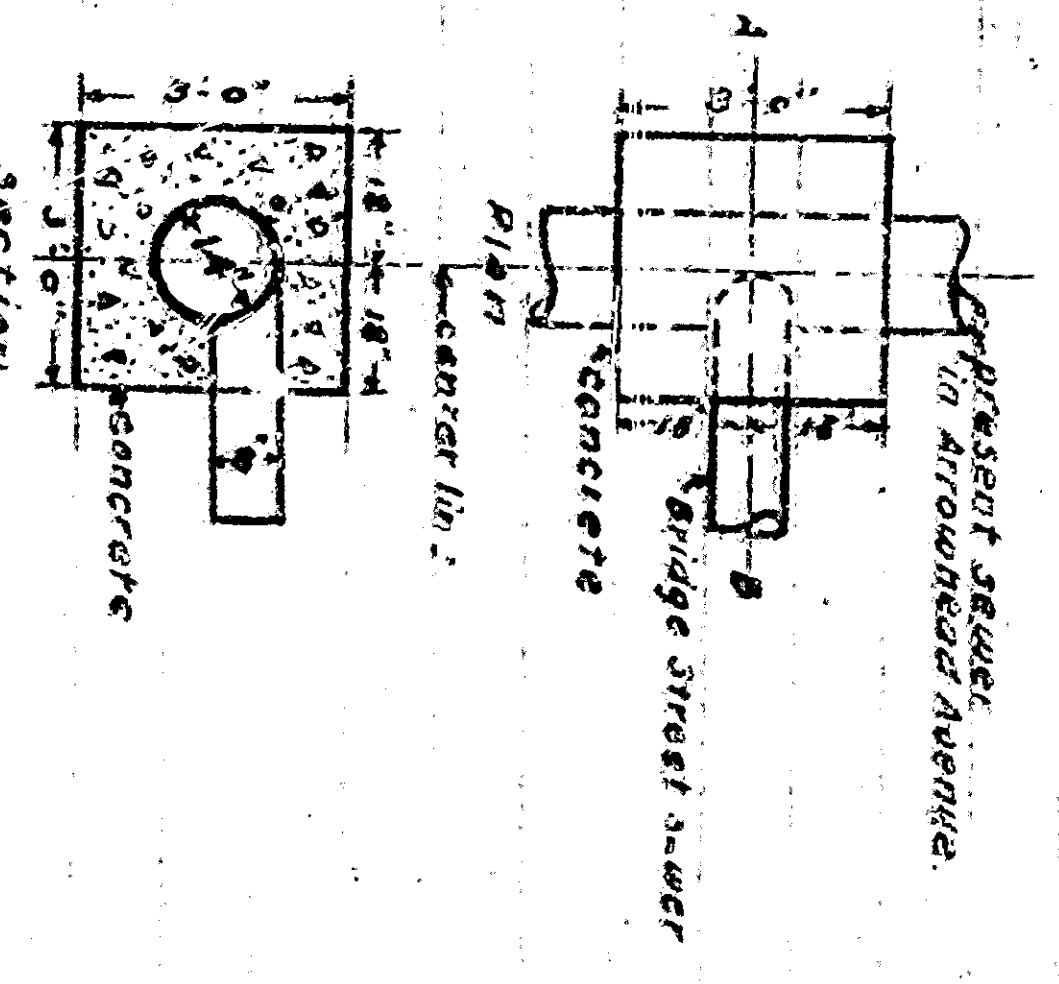
San Bernardino California

November 14-1910. A.L. Sloan City Engineer

No. 26

Scales
Profile Vertical - 1 inch = 4 feet
Horizontal - 1 inch = 40 feet
Plan - 1 inch = 40 feet

PLAN AND SECTION SHOWING CONNECTION WITH EXISTING SEWER NEW IN ARROWHEAD AVENUE AT POINT DESIGNATED A
Scale 1/4" = 1'-0"



Engineer's Office

Engineer's Office

Engineer's Office